

SUPPLEMENTARY INFORMATION

1-Oxabicyclic b-lactams as new inhibitors of elongating MPT—a key enzyme responsible for assembly of cell-surface phosphoglycans of *Leishmania* parasite

*Dipali Ruhela, Patrali Chatterjee and Ram A. Vishwakarma**
Bio-organic Chemistry Lab, National Institute of Immunology,
JNU Complex, New Delhi 10067, India

Table of Contents	Page
1. General Experimental Methods	S2
2. ¹ H NMR spectrum of compound 6	S3
3. ¹³ C NMR spectrum of compound 6	S4
4. ¹ H NMR spectrum of compound 1	S5
5. ¹³ C NMR spectrum of compound 1	S6
6. ¹ H NMR spectrum of compound 7	S7
7. ¹³ C NMR spectrum of compound 7	S8
8. ¹ H NMR spectrum of compound 2	S9
9. ¹³ C NMR spectrum of compound 2	S10
10. ¹ H NMR spectrum of compound 9	S11
11. ¹³ C NMR spectrum of compound 9	S12
12. ¹ H NMR spectrum of compound 10	S13
13. ¹³ C NMR spectrum of compound 10	S14
14. ¹ H NMR spectrum of compound 11	S15
15. ¹³ C NMR spectrum of compound 11	S16
16. ¹ H NMR spectrum of compound 12	S17
17. ¹³ C NMR spectrum of compound 12	S18
18. ¹ H NMR spectrum of compound 13	S19
19. ¹ H NMR spectrum of compound 13	S20

General Experimental Methods

Solvents were purified according to the standard procedures, and reagents used were of highest purity available. The NMR spectra (^1H , ^{13}C , ^{31}P , 2D ^1H - ^1H COSY and ^1H - ^{13}C HETCOR, HMQC and HMBC) were recorded on a 300 MHz spectrometer (Bruker, Avance series) fitted with pulse-field gradient probe, and trimethylsilane (TMS) or residual resonance of deuterated solvent were used as internal reference. For ^{31}P NMR spectra, phosphoric acid was used as external reference. ^{13}C NMR spectra were broadband ^1H decoupled or inverse HMQC experiments. Chemical shifts are expressed in ppm and coupling constants J in Hz. Where appropriate, signal assignments were made by DEPT, ^1H - ^1H COSY and ^1H - ^{13}C HETCOR experiments. Low and high resolution mass spectra were recorded on Platform-II or LCT spectrometer (Micromass-Waters) respectively using acetonitrile-water (1:1) mobile phase. Optical rotations were measured at ambient temperature with a digital Perkin-Elmer 141 polarimeter. Thin layer chromatography was performed on Merck Kieselgel 60 F_{254} plates, compounds visualized either by viewing with a UV lamp (254 nm), or by dipping into ammonium-molybdate/ceric-sulfate developing reagent followed by heating. Silica column chromatography was carried out with silica gel 60 (60-120 mesh).

Current Data Parameters
 NAME DR-HBLact
 EXPNO 1
 PROCNO 1

F2 - Acquisition Parameters

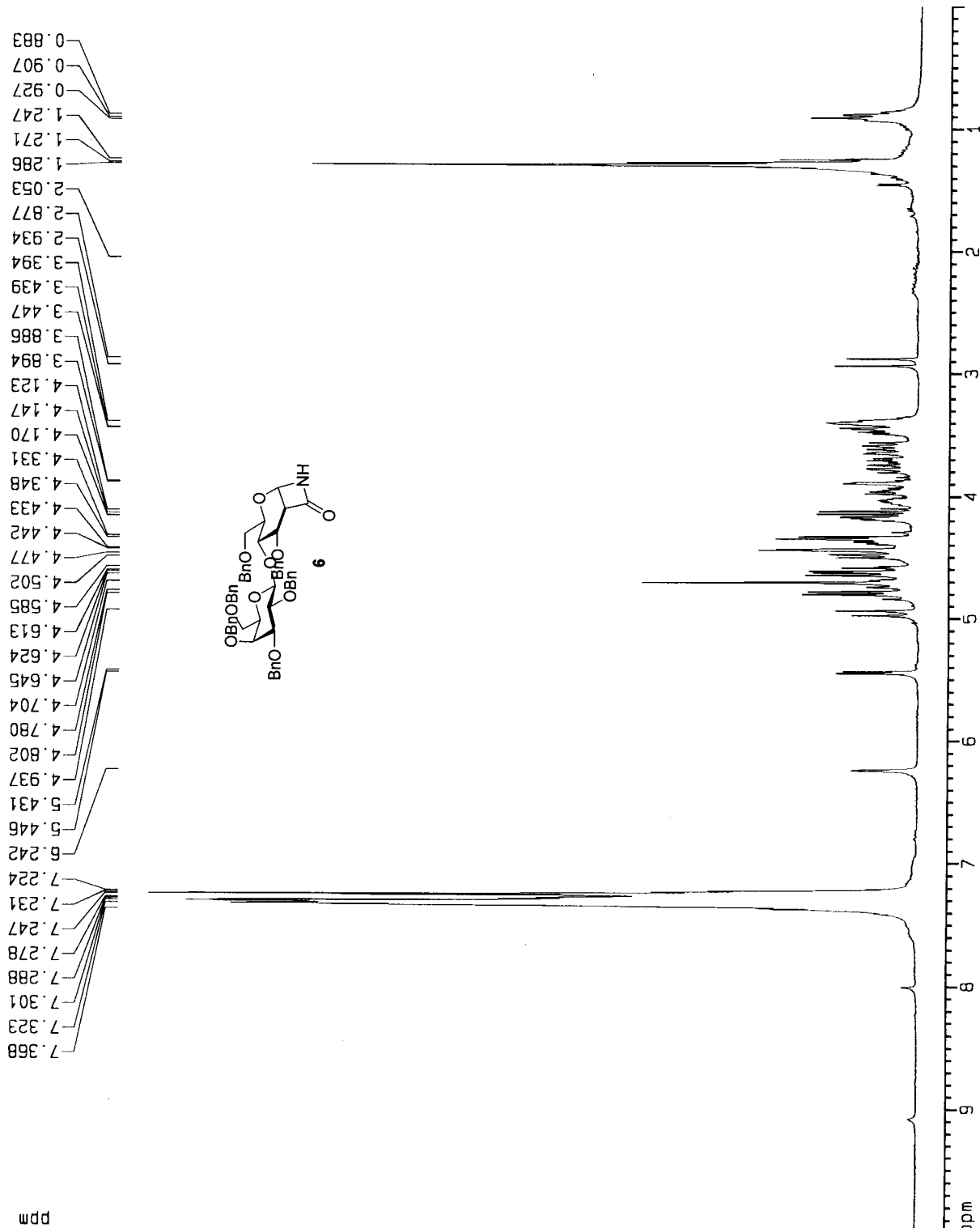
Date_ 500000
 Time 9.51
 INSTRUM drx300
 PROBHD 5 mm GNP 1H
 PULPROG zg
 TD 32768
 SOLVENT CDCl3
 NS 11
 DS 0
 SWH 3591.954 Hz
 FIDRES 0.109618 Hz
 AQ 4.5613556 sec
 RG 90.5
 DW 139.200 usec
 DE 4.50 usec
 TE 300.0 K
 D1 1.0000000 sec
 P1 8.40 usec
 DE 4.50 usec
 SF01 300.1315200 MHz
 NUC1 1H
 PL1 -4.00 dB

F2 - Processing parameters

SI 32768
 SF 300.1300086 MHz
 MDW EM
 SSB 0
 LB 0.00 Hz
 GB 0
 PC 1.00

1D NMR plot parameters

CX 20.00 cm
 F1P 10.000 ppm
 F1 3001.30 Hz
 F2P 0.000 ppm
 F2 0.00 Hz
 PPMCM 0.50000 ppm/cm
 HZCM 150.06500 Hz/cm



Current Data Parameters
 NAME DR-HBLact.13C
 EXPNO 1
 PROCNO 1

F2 - Acquisition Parameters

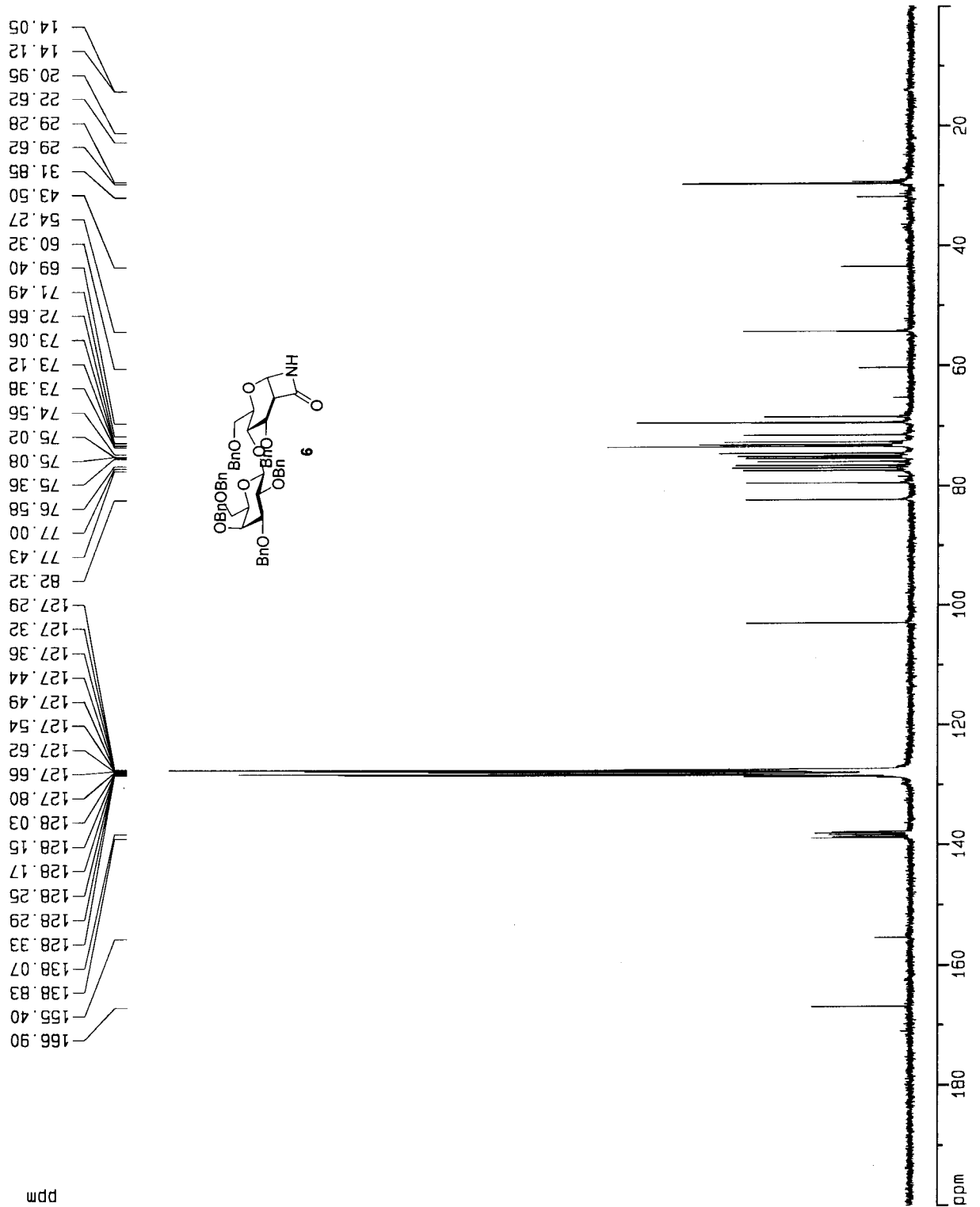
Date_ 500000
 Time 10.24
 INSTRUM drx300
 PROBHD 5 mm QNP 1H
 PULPROG zgpg
 TD 65536
 SOLVENT CDCl3
 NS 1380
 DS 0
 SWH 22675.736 Hz
 FIDRES 0.346004 Hz
 AQ 1.4451188 sec
 RG 8192
 DW 22.050 usec
 DE 4.50 usec
 TE 300.0 K
 d11 0.0300000 sec
 PL12 19.00 dB
 CPDPRG2 waltz16
 PCPD2 100.00 usec
 SF02 300.1322735 MHz
 NUC2 1H
 PL2 19.00 dB
 D1 2.0000000 sec
 P1 5.70 usec
 DE 4.50 usec
 SF01 75.4735300 MHz
 NUC1 13C
 PL1 -4.00 dB

F2 - Processing parameters

SI 32768
 SF 75.4677569 MHz
 MDW EM
 SSB 0
 LB 1.00 Hz
 GB 0
 PC 1.00

1D NMR plot parameters

CX 20.00 cm
 F1P 200.000 ppm
 F1 15093.55 Hz
 F2P 0.000 ppm
 F2 0.00 Hz
 PPMCM 10.00000 ppm/cm
 HZCM 754.67761 Hz/cm



Current Data Parameters
 NAME DR-6-190
 EXPNO 1
 PROCNO 1

F2 - Acquisition Parameters

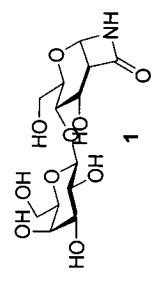
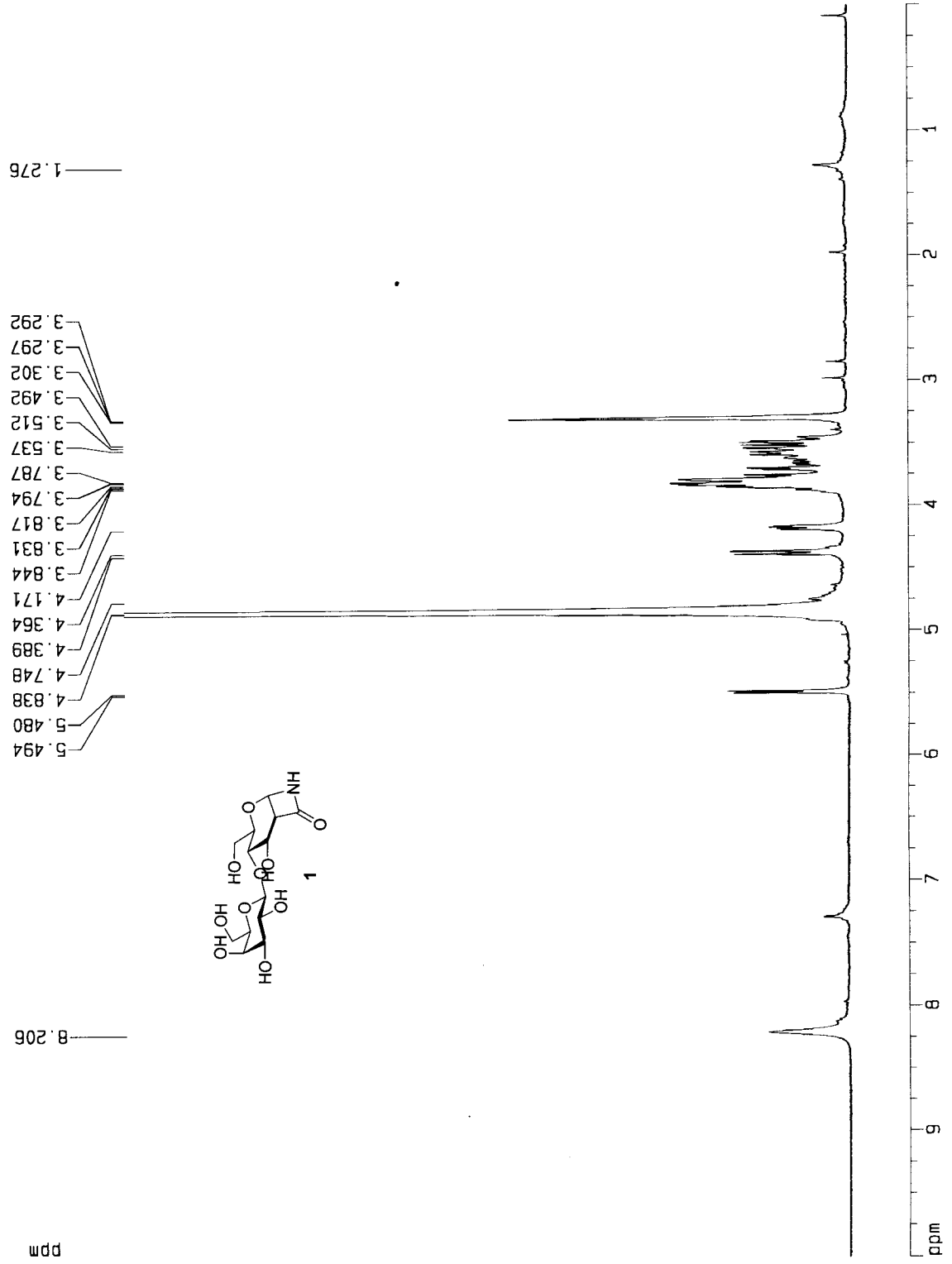
Date_ 500000
 Time 10.08
 INSTRUM drx300
 PROBH1 5 mm QNP 1H
 PULPROG zg
 TD 32768
 SOLVENT MeOH
 NS 24
 DS 0
 SWH 3591.954 Hz
 FIDRES 0.109618 Hz
 AQ 4.5613556 sec
 RG 362
 DW 139.200 usec
 DE 4.50 usec
 TE 300.0 K
 O1 1.0000000 sec
 P1 8.40 usec
 DE 4.50 usec
 SFO1 300.1315200 MHz
 NUC1 1H
 PL1 -4.00 dB

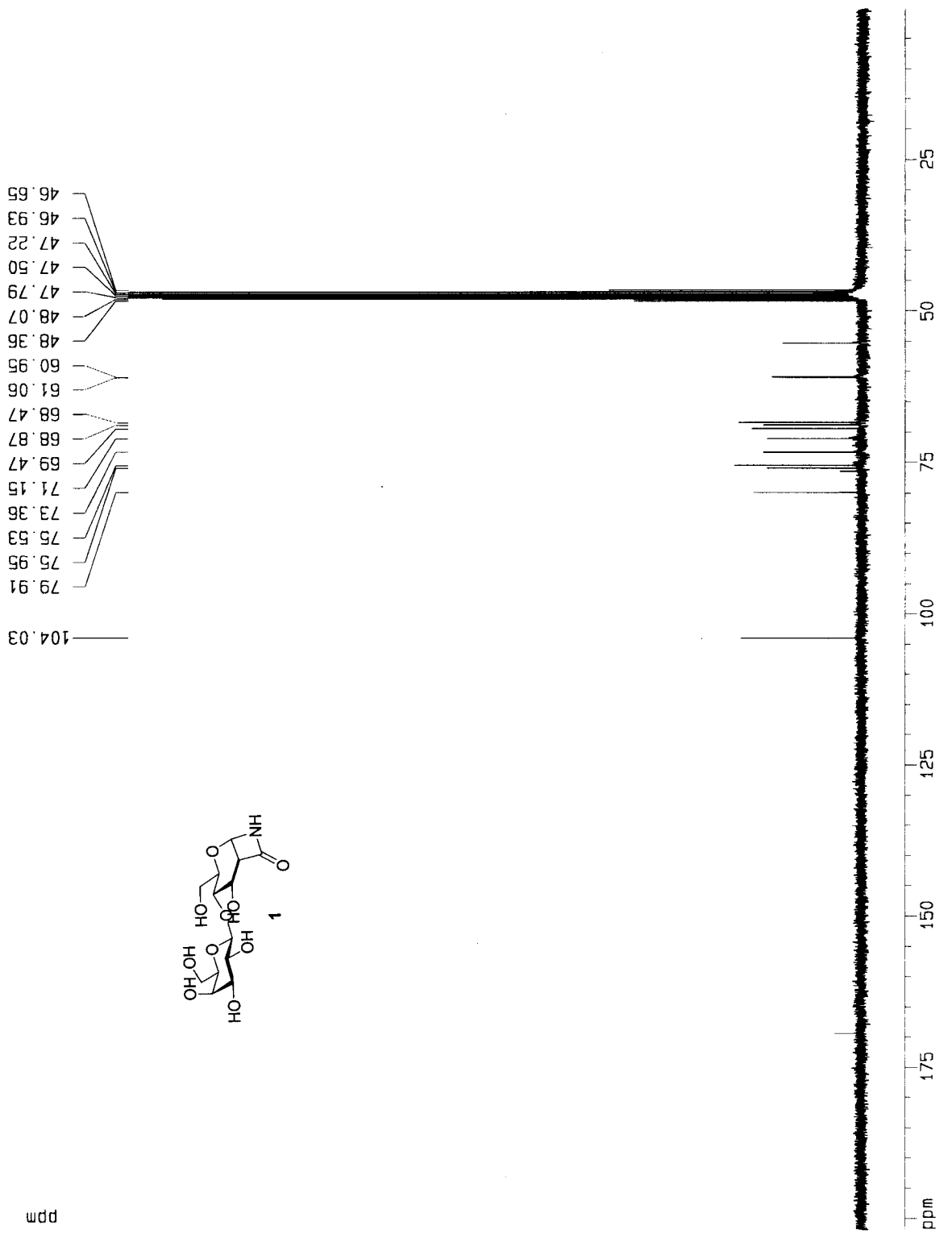
F2 - Processing parameters

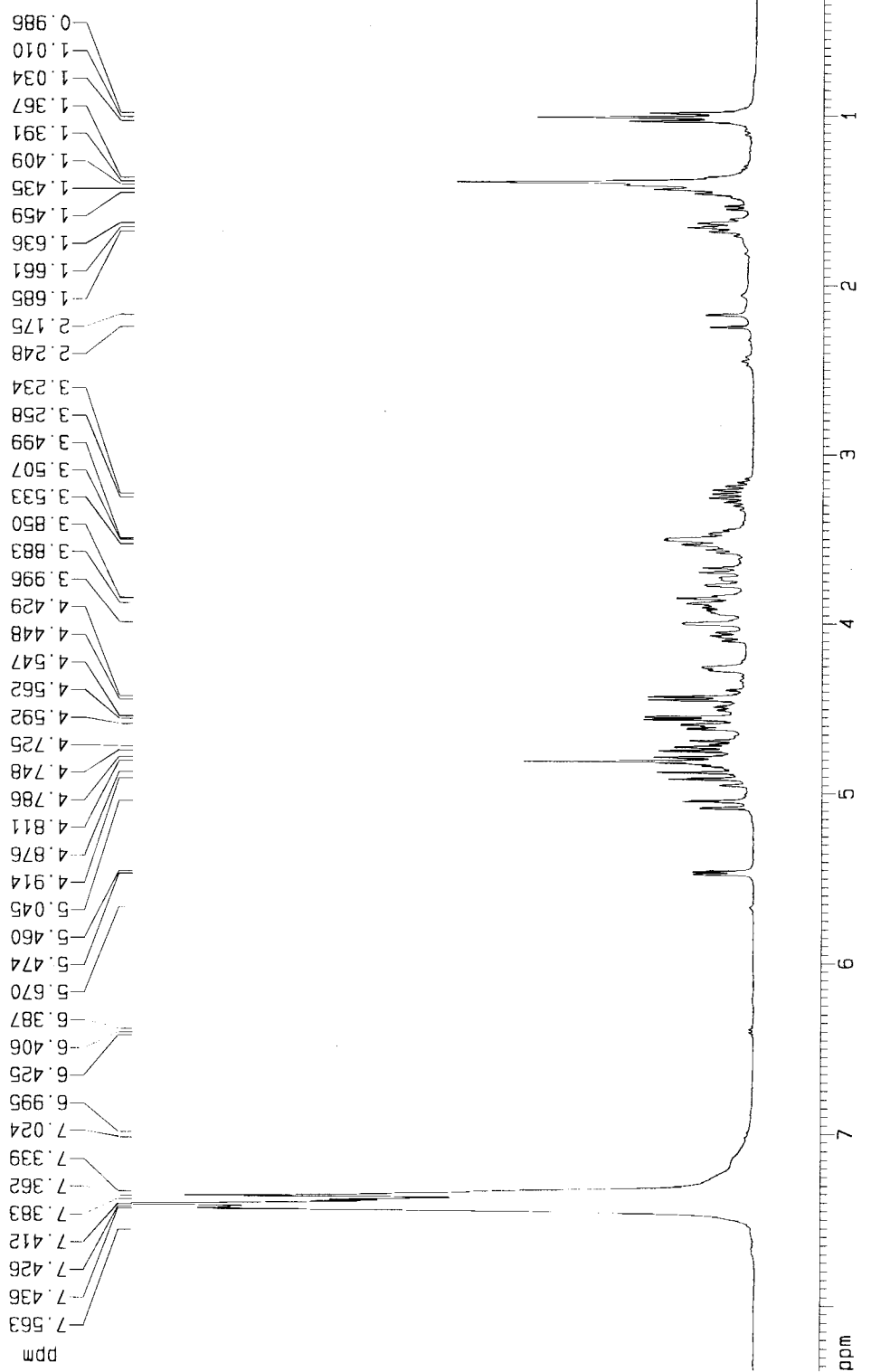
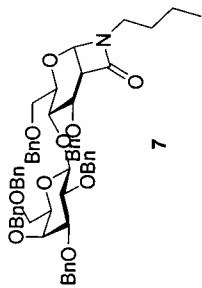
SI 32768
 SF 300.1300086 MHz
 WDW EM
 SSB 0
 LB 0.00 Hz
 GB 0
 PC 1.00

1D NMR plot parameters

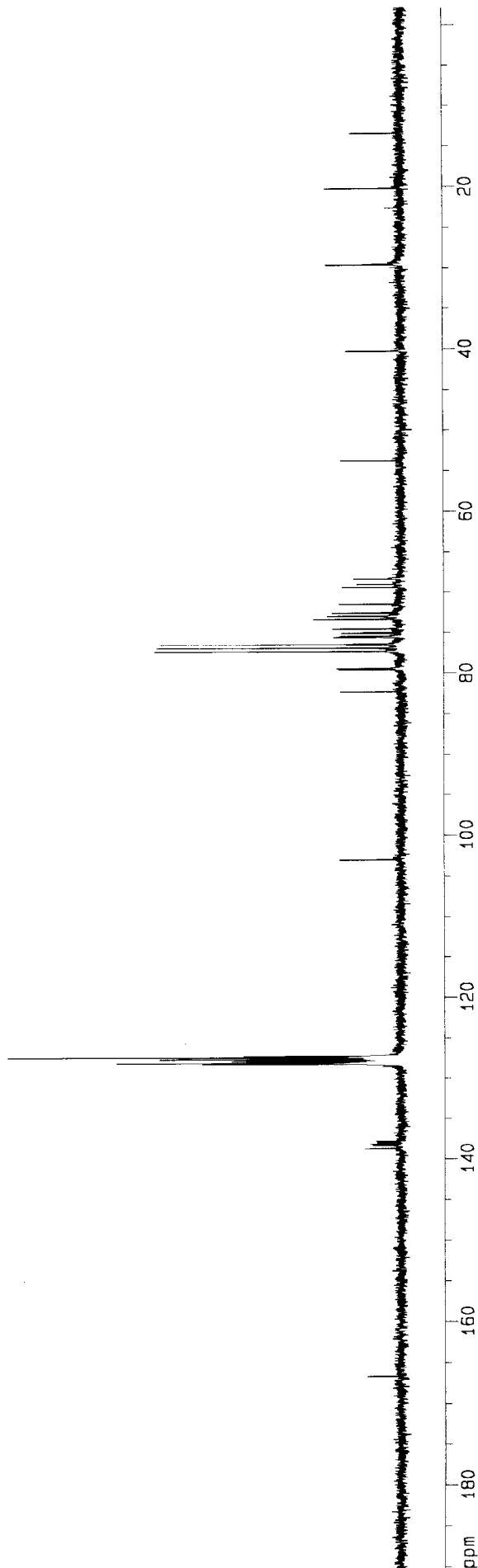
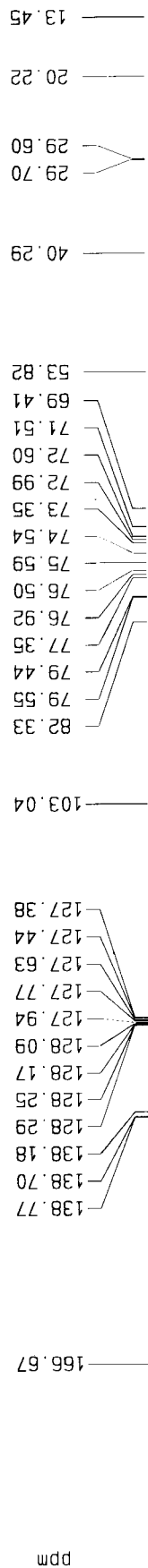
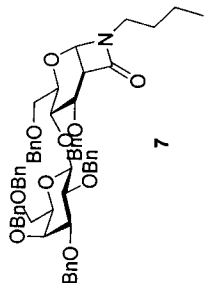
CX 20.00 cm
 F1P 10.000 ppm
 F1 3001.30 Hz
 F2P 0.000 ppm
 F2 0.00 Hz
 PPMCM 0.50000 ppm/cm
 HZCM 150.06500 Hz/cm

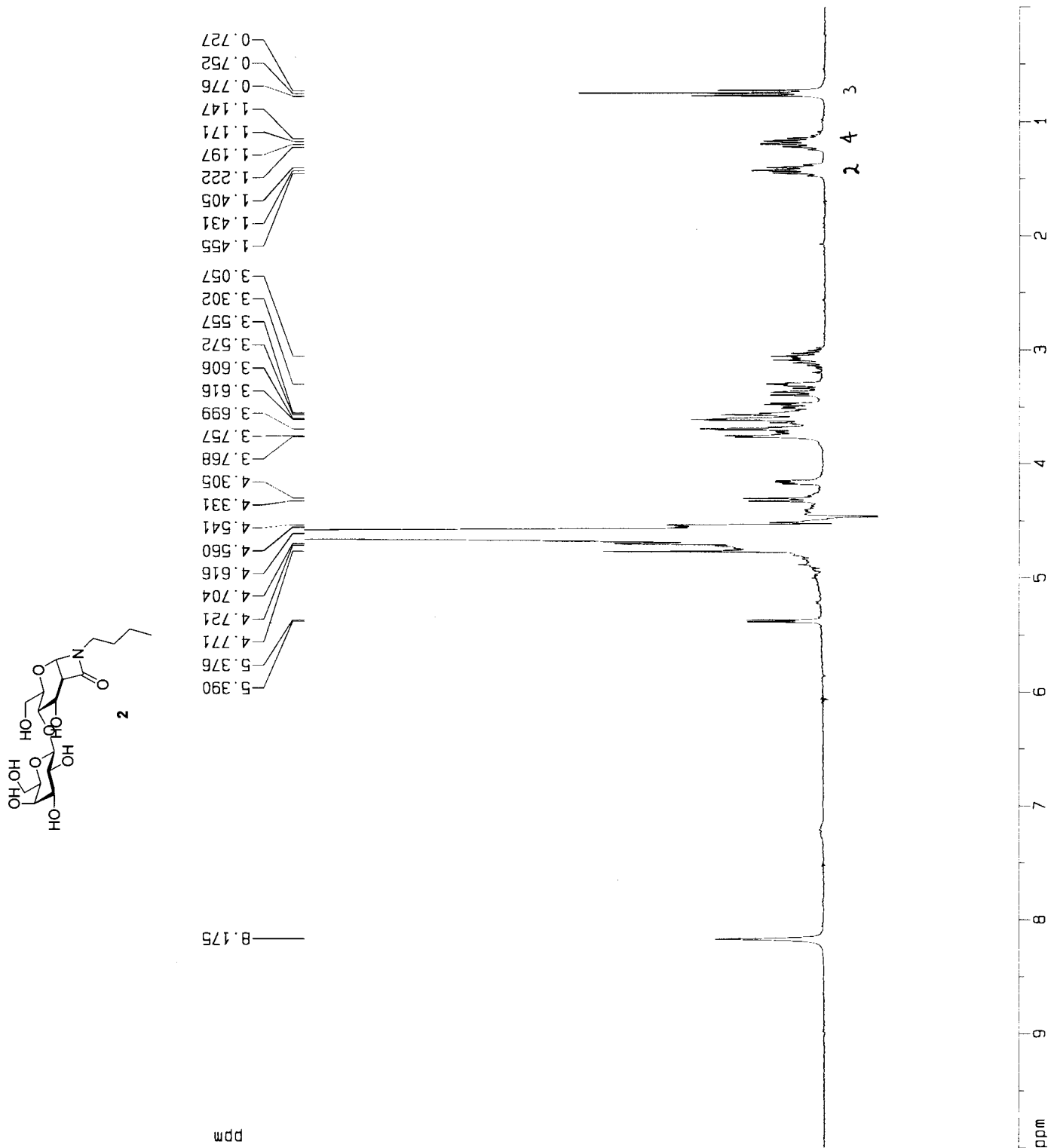






DR-6-188-13C





Current Data Parameters
 NAME DR-6-192.13C
 EXPNO 1
 PROCNO 1

F2 - Acquisition Parameters

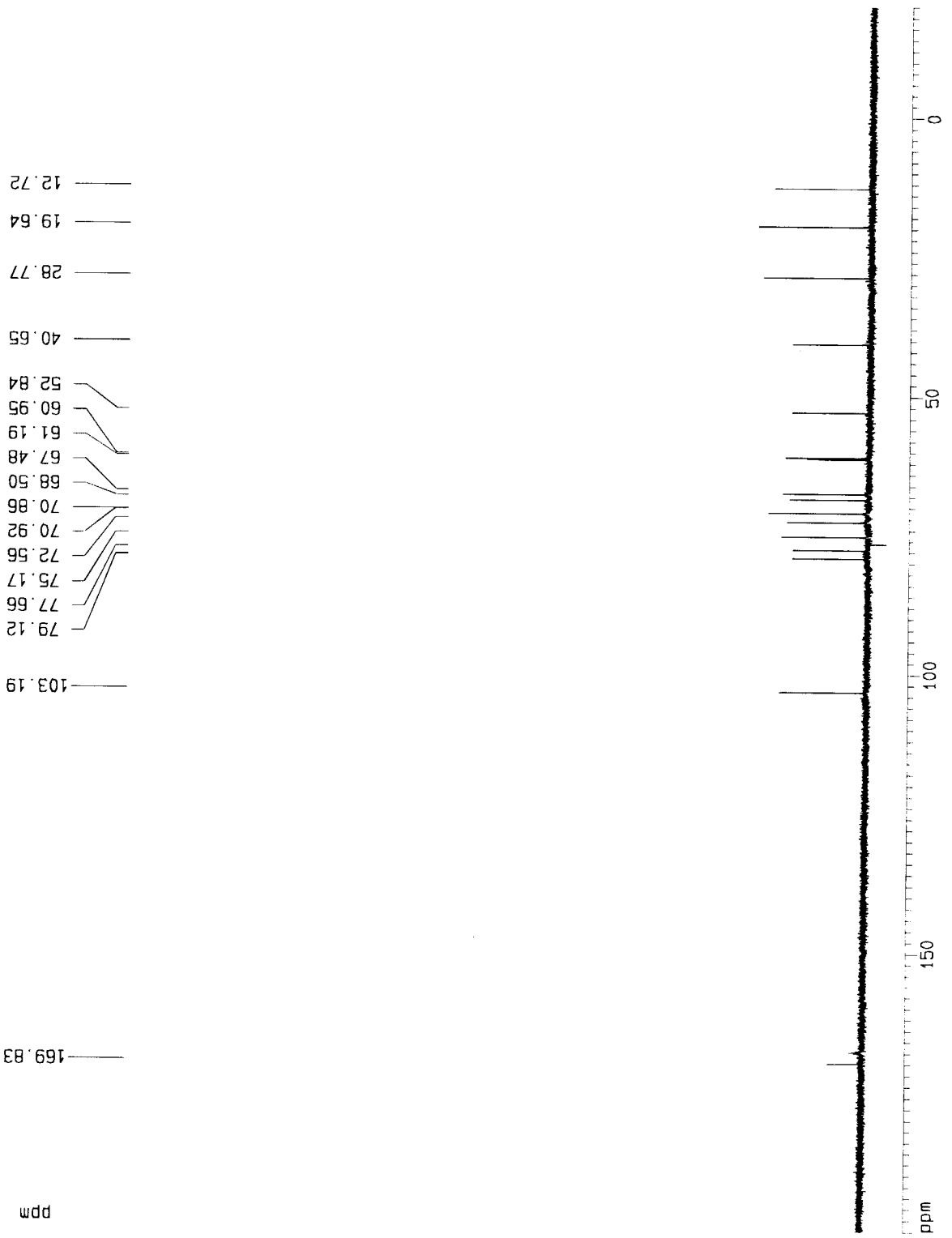
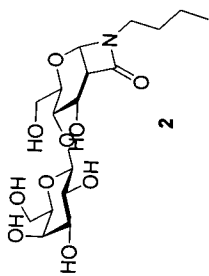
Date_ 500000
 Time 16.55
 INSTRUM drx300
 PROBHD 5 mm GNP 1H
 PULPROG zgdc
 TD 65536
 SOLVENT D2O
 NS 10000
 DS 0
 SWH 22675.736 Hz
 FIDRES 0.346004 Hz
 AQ 1.4451188 sec
 RG 9195.2
 DW 22.050 usec
 DE 4.50 usec
 TE 300.0 K
 d11 0.030000 sec
 PL12 19.00 dB
 CPDPRG2 waltz16
 PCPD2 100.00 usec
 SF02 300.1322735 MHz
 NUC2 1H
 PL2 19.00 dB
 D1 2.00000000 sec
 P1 5.70 usec
 DE 4.50 usec
 SF01 75.4735300 MHz
 NUC1 13C
 PL1 -4.00 dB

F2 - Processing parameters

SI 32768
 SF 75.4677569 MHz
 WDW EM
 SSB 0
 LB 0.50 Hz
 GB 0
 PC 1.00

1D NMR plot parameters

CX 20.00 cm
 F1P 200.000 ppm
 F1 15093.55 Hz
 F2P -20.000 ppm
 F2 -1509.36 Hz
 PPMCM 11.00000 ppm/cm
 HZCM 830.14532 Hz/cm



Current Data Parameters
 NAME GalMan-octaAc
 EXPNO 1
 PROCNO 1

F2 - Acquisition Parameters

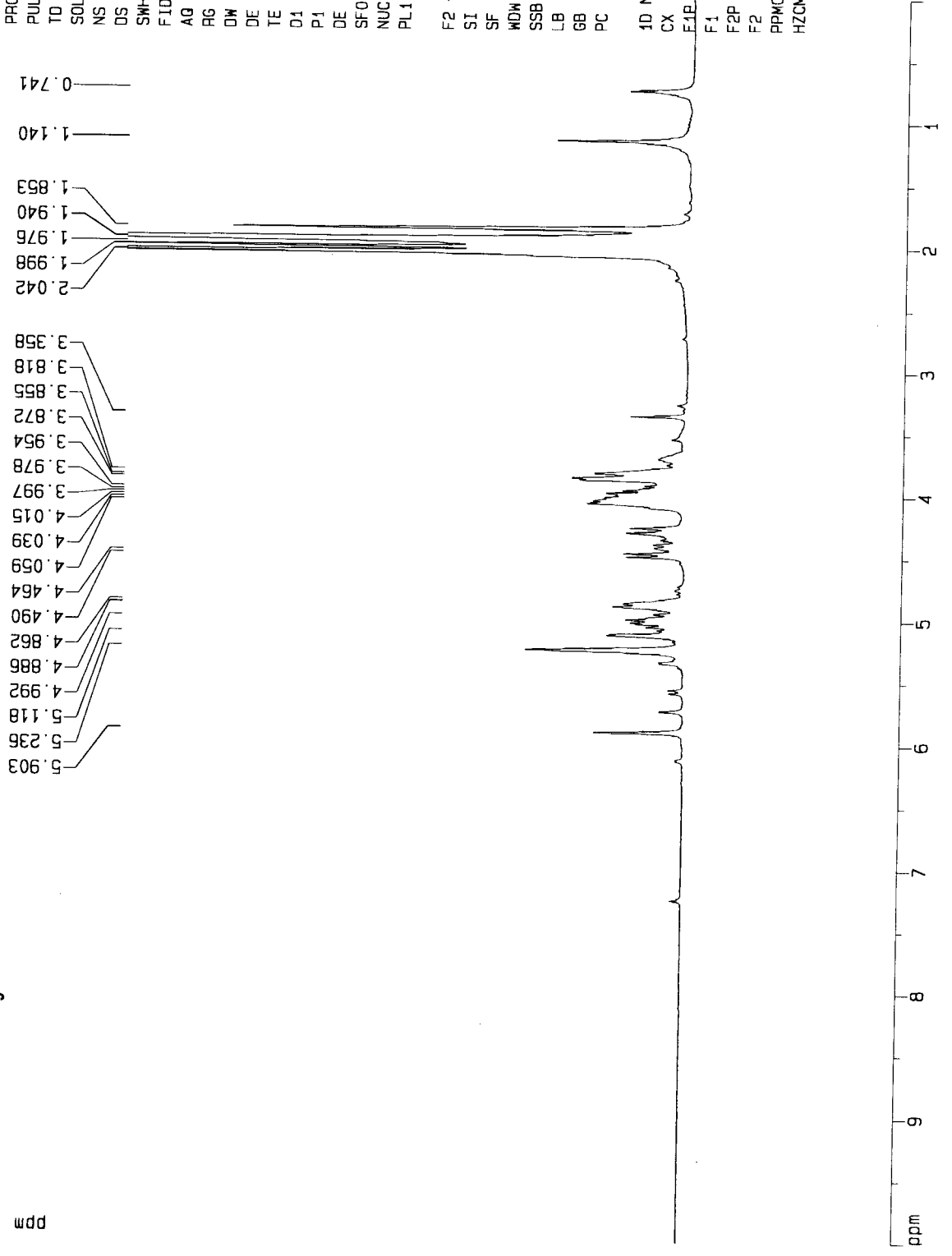
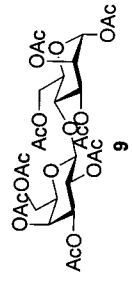
Date_ 500000
 Time 16.37
 INSTRUM drx300
 PROBHD 5 mm GNP 1H
 PULPROG zg
 TD 32768
 SOLVENT CDC13
 NS 21
 DS 0
 SMH 3591.954 Hz
 FIDRES 0.109618 Hz
 AQ 4.5613556 sec
 RG 64
 DW 139.200 usec
 DE 4.50 usec
 TE 300.0 K
 D1 1.00000000 sec
 P1 8.40 usec
 DE 4.50 usec
 SF01 300.1315200 MHz
 NUC1 1H
 PL1 -4.00 dB

F2 - Processing parameters

SI 32768
 SF 300.1300086 MHz
 WDW EM
 SSB 0
 LB 0.00 Hz
 GB 0
 PC 1.00

1D NMR plot parameters

CX 20.00 cm
 F1 10.000 ppm
 F2 3001.30 Hz
 F2 0.000 ppm
 F2 0.00 Hz
 PPMCM 0.50000 ppm/cm
 HZCM 150.06499 Hz/cm

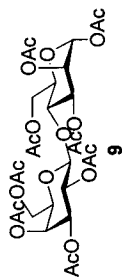


Current Data Parameters
 NAME GalManOctaAc.1
 EXPNO 1
 PROCNO 1

F2 - Acquisition Parameters
 Date_ 500000
 Time 16.40
 INSTRUM dpx300
 PROBHD 5 mm GNP 1H
 PULPROG zgpg
 TD 65536
 SOLVENT CDC13
 NS 800
 DS 0
 SWH 22675.736 Hz
 FIDRES 0.346004 Hz
 AQ 1.4451188 sec
 RG 8192
 DW 22.050 usec
 DE 4.50 usec
 TE 300.0 K
 d11 0.0300000 sec
 PL12 19.00 dB
 CPDPRG2 waltz16
 PCPD2 100.00 usec
 SF02 300.1322735 MHz
 NUC2 1H
 PL2 19.00 dB
 D1 2.00000000 sec
 P1 5.70 usec
 DE 4.50 usec
 SF01 75.4735300 MHz
 NUC1 13C
 PL1 -4.00 dB

F2 - Processing parameters
 SI 32768
 SF 75.4677569 MHz
 MDM EM
 SSB 0
 LB 2.00 Hz
 GB 0
 PC 1.00

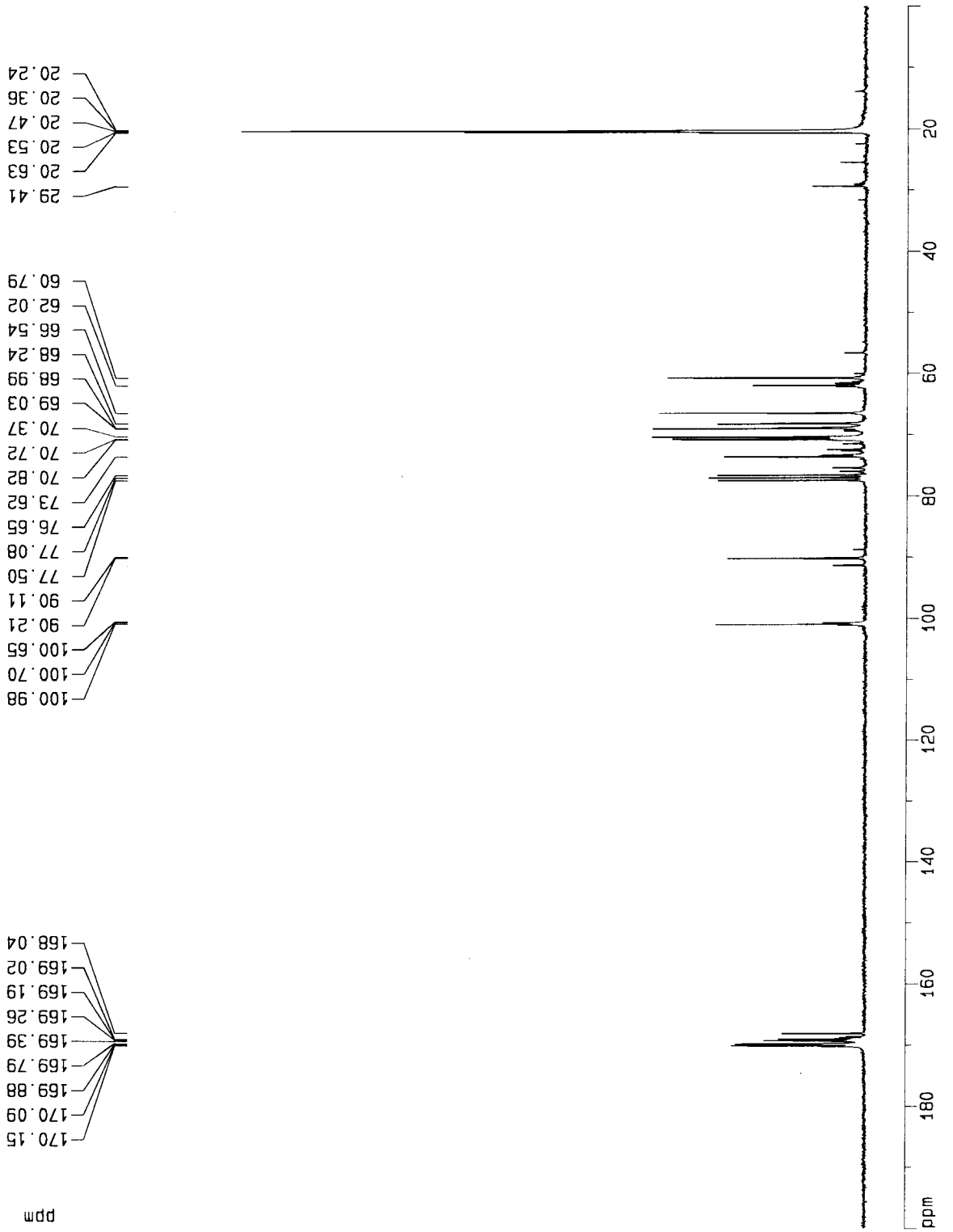
1D NMR plot parameters
 CX 20.00 cm
 F1P 200.000 ppm
 F1 15093.55 Hz
 F2P 0.000 ppm
 F2 0.00 Hz
 PPMCM 10.00000 ppm/cm
 HZCM 754.67761 Hz/cm



170.15
170.09
169.88
169.79
169.39
169.26
169.19
169.02
168.04

100.98
100.70
100.65
90.21
90.11
77.50
77.08
76.65
73.62
70.82
70.72
70.37
69.03
68.99
68.24
66.54
62.02
60.79

29.41
20.63
20.53
20.47
20.36
20.24



Current Data Parameters
 NAME DR-TBS-Ac-GM
 EXPNO 1
 PROCNO 1

F2 - Acquisition Parameters

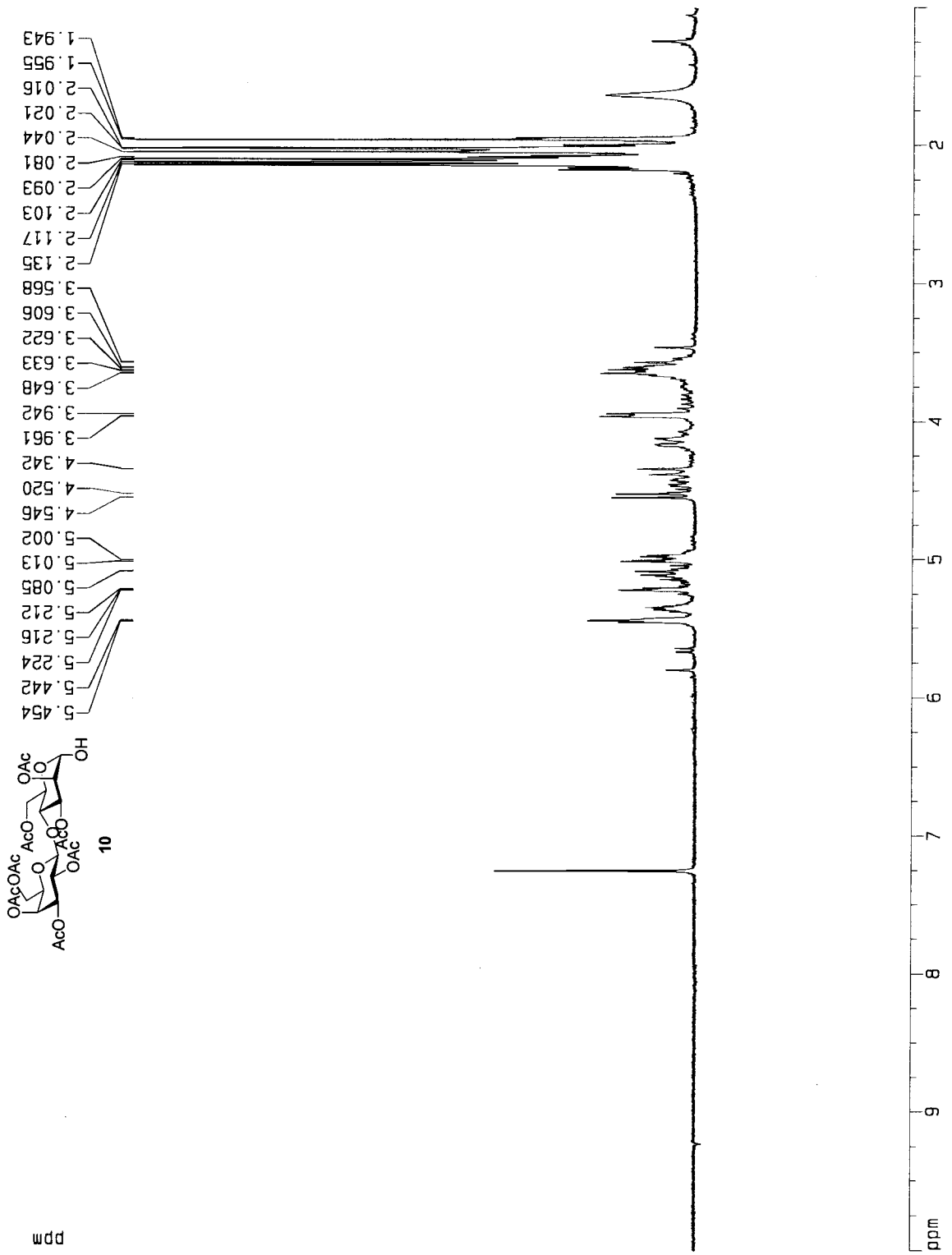
Date_ 500000
 Time 9.31
 INSTRUM drx300
 PROBHD 5 mm GNP 1H
 PULPROG zg
 TD 32768
 SOLVENT CDC13
 NS 40
 DS 0
 SWH 3591.954 Hz
 FIDRES 0.109618 Hz
 AQ 4.5613556 sec
 RG 362
 DW 139.200 usec
 DE 4.50 usec
 TE 300.0 K
 D1 1.0000000 sec
 P1 8.40 usec
 DE 4.50 usec
 SF01 300.1315200 MHz
 NUC1 1H
 PL1 -4.00 dB

F2 - Processing parameters

SI 32768
 SF 300.1300086 MHz
 WDW EM
 SSB 0
 LB 0.00 Hz
 GB 0
 PC 1.00

1D NMR plot parameters

CX 20.00 cm
 F1P 10.000 ppm
 F1 3001.30 Hz
 F2P 1.000 ppm
 F2 300.13 Hz
 PPMCM 0.45000 ppm/cm
 HZCM 135.05850 Hz/cm



Current Data Parameters
 NAME DR-4-73.13C
 EXPNO 1
 PROCNO 1

F2 - Acquisition Parameters

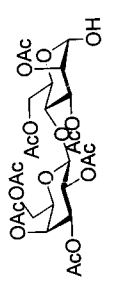
Date_ 500000
 Time 17.31
 INSTRUM dpX300
 PROBHD 5 mm QNP 1H
 PULPROG zgpg
 TD 65536
 SOLVENT CDCl3
 NS 3823
 DS 0
 SNH 22675.736 Hz
 FIDRES 0.346004 Hz
 AQ 1.445188 sec
 RG 8192
 DW 22.050 usec
 DE 4.50 usec
 TE 300.0 K
 d11 0.0300000 sec
 PL12 19.00 dB
 CPDPRG2 waltz16
 PCPD2 100.00 usec
 SF02 300.1322735 MHz
 NUC2 1H
 PL2 19.00 dB
 D1 2.0000000 sec
 P1 5.70 usec
 DE 4.50 usec
 SF01 75.4735300 MHz
 NUC1 13C
 PL1 -4.00 dB

F2 - Processing parameters

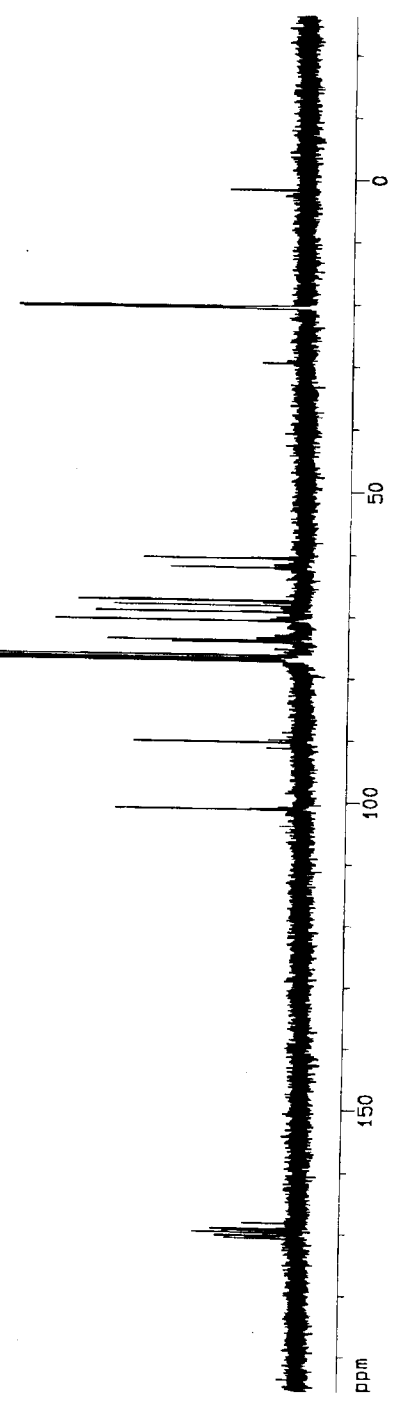
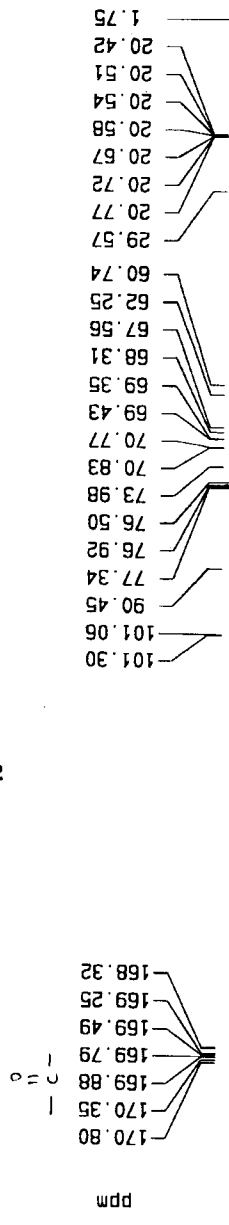
SI 32768
 SF 75.4677569 MHz
 NDM EM
 SSB 0
 LB 0.30 Hz
 GB 0
 PC 1.00

1D NMR plot parameters

CX 20.00 cm
 F1P 195.650 ppm
 F1 14765.24 Hz
 F2P -26.276 ppm
 F2 -1983.03 Hz
 PPMCM 11.09630 ppm/cm
 HZCM 837.41321 Hz/cm



10



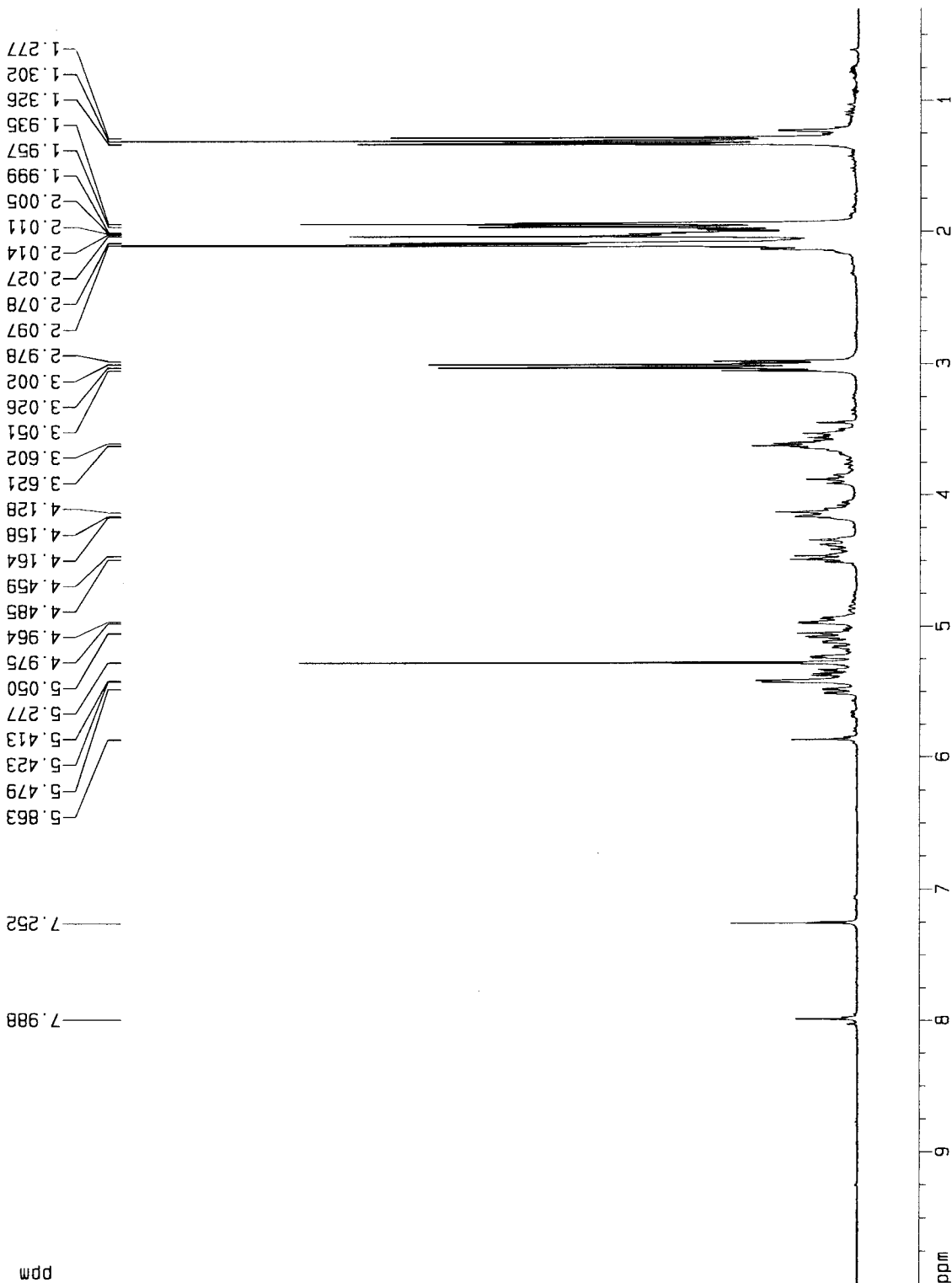
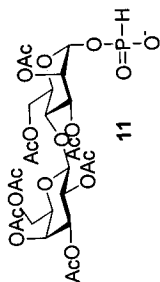
Current Data Parameters
 NAME DR-6-86
 EXPNO 1
 PROCNO 1

F2 - Acquisition Parameters

Date_ 500000
 Time 12:58
 INSTRUM drx300
 PROBHD 5 mm GNP 1H
 PULPROG zg
 TD 32768
 SOLVENT CDC13
 NS 13
 DS 0
 SMH 3591.954 Hz
 FIDRES 0.109618 Hz
 AQ 4.5613556 sec
 RG 181
 DW 139.200 usec
 DE 4.50 usec
 TE 300.0 K
 D1 1.0000000 sec
 P1 8.40 usec
 DE 4.50 usec
 SF01 300.1315200 MHz
 NUC1 1H
 PL1 -4.00 dB

F2 - Processing parameters

SI 32768
 SF 300.1300086 MHz
 WDW EM
 SSB 0
 LB 0.00 Hz
 GB 0
 PC 1.00
 1D NMR plot parameters
 CX 20.00 cm
 F1P 10.000 ppm
 F1 3001.30 Hz
 F2P 0.300 ppm
 F2 90.04 Hz
 PPMCM 0.48500 ppm/cm
 HZCM 145.56305 Hz/cm



Current Data Parameters
 NAME DR-6-86.13C
 EXPNO 1
 PROCNO 1

F2 - Acquisition Parameters

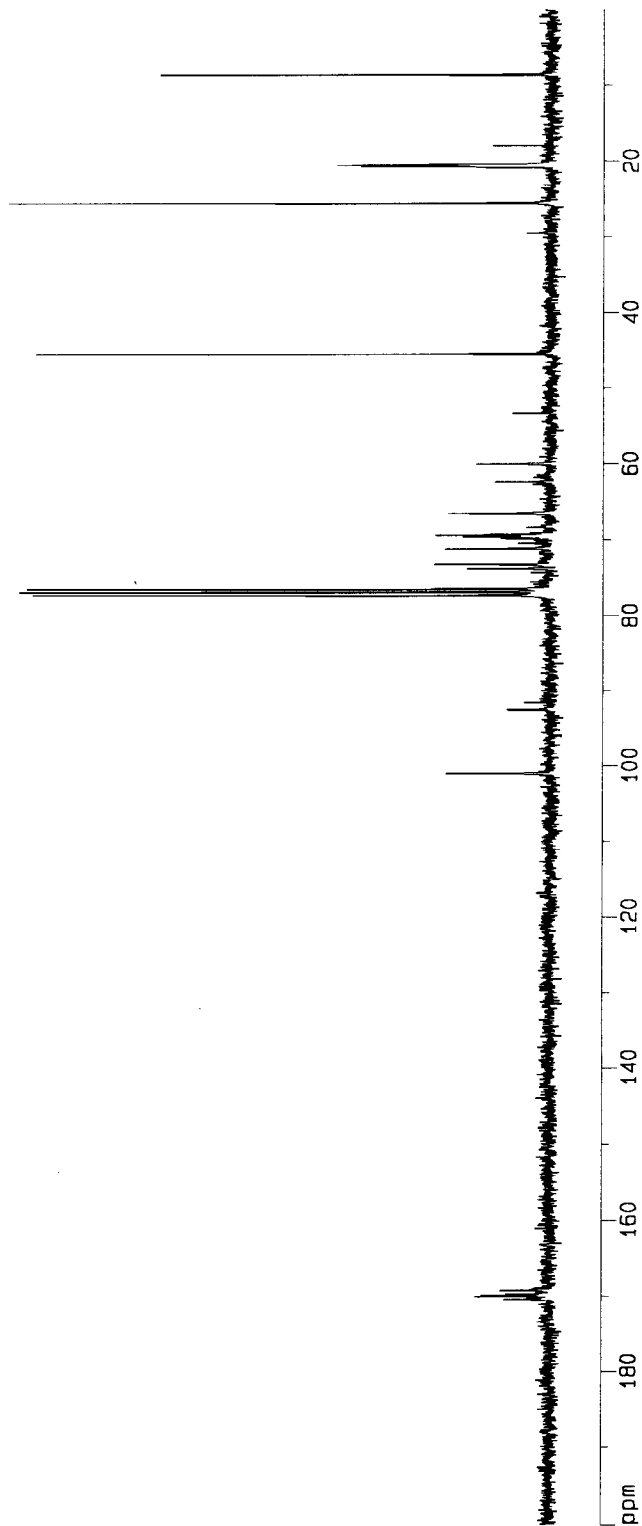
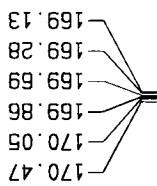
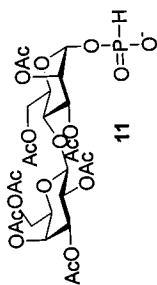
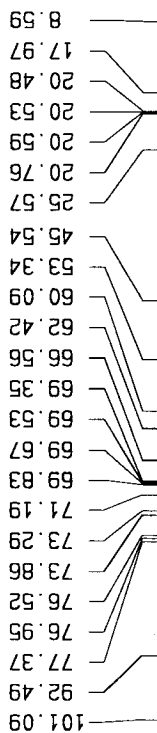
Date_ 500000
 Time 13.06
 INSTRUM drx300
 PROBHD 5 mm GNP 1H
 PULPROG zgdc
 TD 65536
 SOLVENT CDCl3
 NS 787
 DS 0
 SWH 22675.736 Hz
 FIDRES 0.346004 Hz
 AQ 1.445188 sec
 RG 8192
 DW 22.050 usec
 DE 4.50 usec
 TE 300.0 K
 d11 0.0300000 sec
 PL12 19.00 dB
 CPDPRG2 waltz16
 PCPD2 100.00 usec
 SF02 300.1322735 MHz
 NUC2 1H
 PL2 19.00 dB
 D1 2.0000000 sec
 P1 5.70 usec
 DE 4.50 usec
 SF01 75.4735300 MHz
 NUC1 13C
 PL1 -4.00 dB

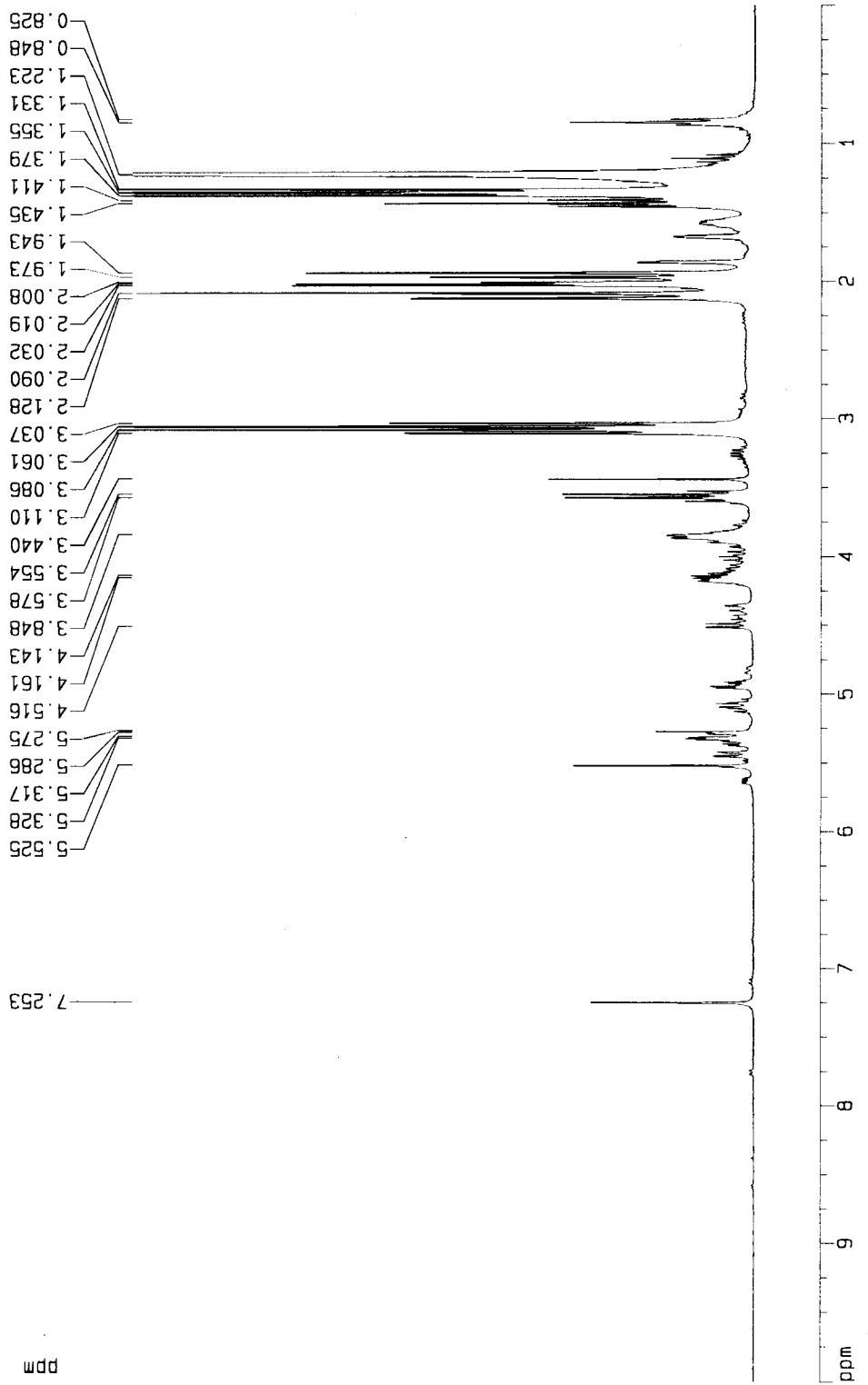
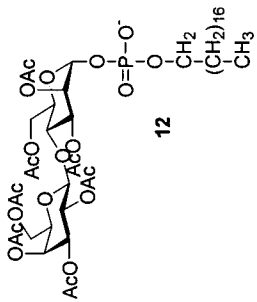
F2 - Processing parameters

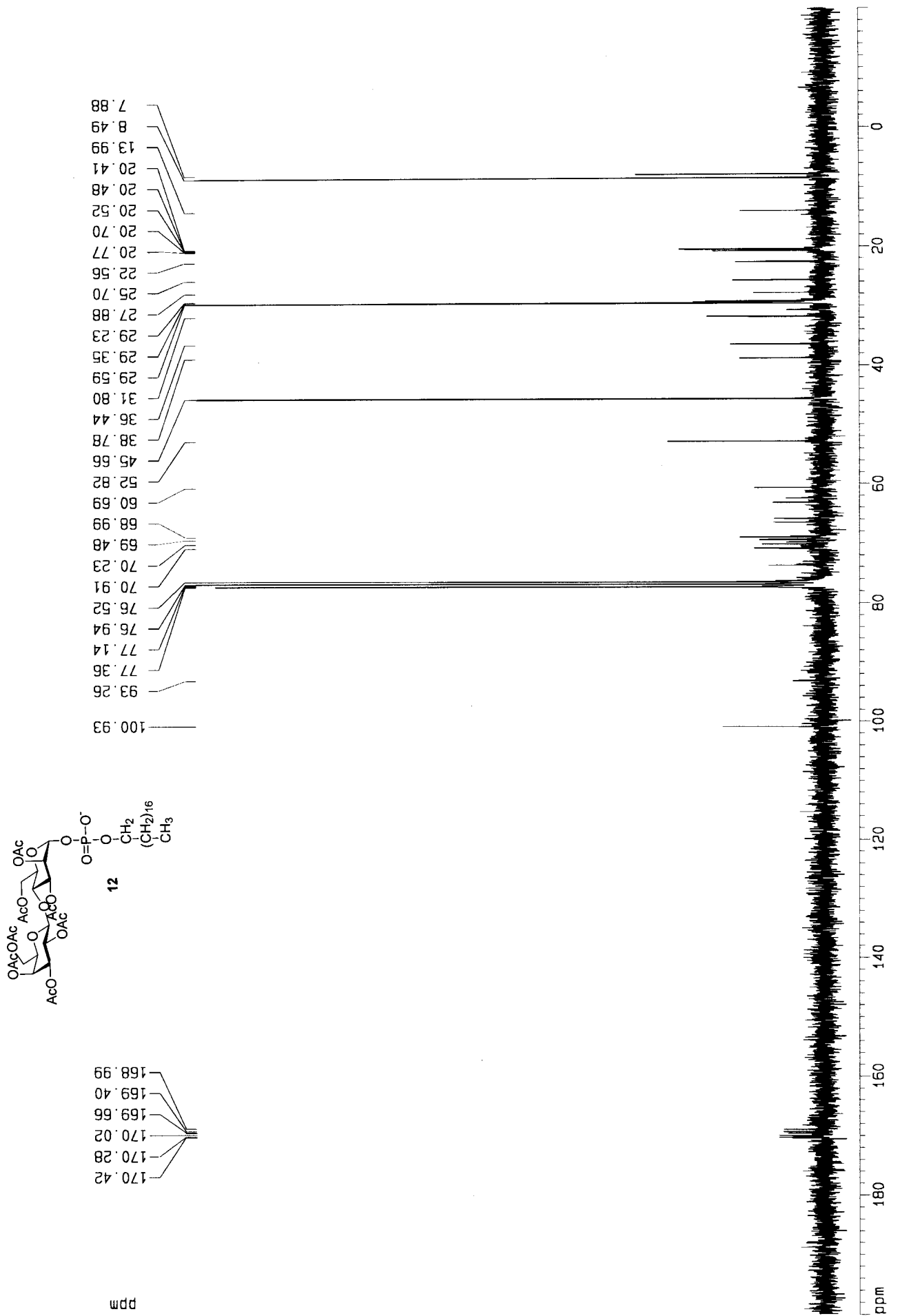
SI 32768
 SF 75.4677569 MHz
 WDW EM
 SSB 0
 LB 2.00 Hz
 GB 0
 PC 1.00

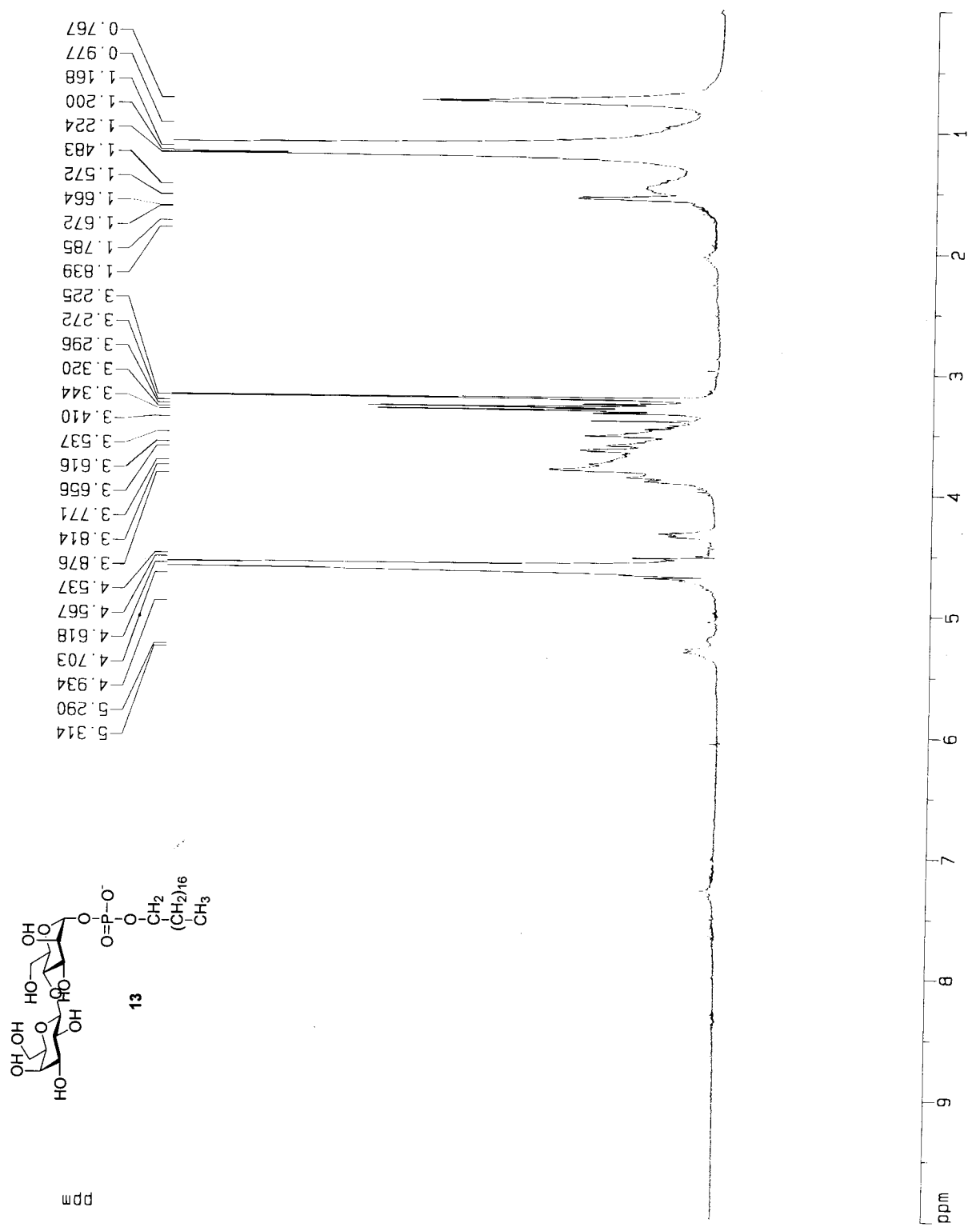
1D NMR plot parameters

CX 20.00 cm
 F1P 200.000 ppm
 F1 15093.55 Hz
 F2P 0.000 ppm
 F2 0.00 Hz
 PPMCM 10.00000 ppm/cm
 HZCM 754.67761 Hz/cm









Current Data Parameters
 NAME RAV.13C
 EXPNO 2
 PROCNO 1

F2 - Acquisition Parameters

Date_ 500000
 Time 11.53
 INSTRUM grx300
 PROBHD 5 mm GNP 1H
 PULPROG zgdc
 TD 65536
 SOLVENT CDCl3
 NS 10000
 DS 0
 SWH 22675.736 Hz
 FIDRES 0.346004 Hz
 AQ 1.4451188 sec
 RG 8192
 DW 22.050 usec
 DE 4.50 usec
 TE 300.0 K
 d11 0.0300000 sec
 PL12 19.00 dB
 CPDPRG2 waitz16
 PCPD2 100.00 usec
 SF02 300.1322735 MHz
 NUC2 1H
 PL2 19.00 dB
 D1 2.0000000 sec
 P1 5.70 usec
 DE 4.50 usec
 SF01 75.4735300 MHz
 NUC1 13C
 PL1 -4.00 dB

F2 - Processing parameters

SI 32768
 SF 75.4677569 MHz
 WDM EM
 SSB 0
 LB 1.00 Hz
 GB 0
 PC 1.00

1D NMR plot parameters

CX 20.00 cm
 F1P 200.000 ppm
 F1 15093.55 Hz
 F2P 0.000 ppm
 F2 0.00 Hz
 PPMCM 10.00000 ppm/cm
 HZCM 754.67761 Hz/cm

